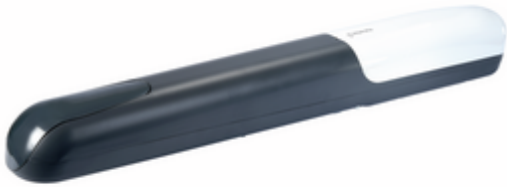


# Comfort RA2224



## Article

---

Item no.	Description
178379	<b>Comfort RA2224</b> Operator for swing gates up to 3.0 m: 24 V DC motor, 1,500 N, 2.6 cm/s, 120°, without encoder

## Scope of delivery

---

- Motor unit without cable (2x1.5 mm<sup>2</sup> required)
- FCRAY end stop for direction OPEN
- Gate and angle bracket

## Features

---

### Comfort RA2224

#### Features

- Current-dependent obstacle detection - no active closing edge protection necessary (only operators with encoder)
- Concealed running operator unit
- Very quiet mechanism
- All mechanical parts protected against weather influences
- Sturdy die-cast aluminum housing and UV-resistant plastic covers
- Adjustable gate and pillar angles for easy motor installation

## Technical data

---

### Comfort RA2224

- Encoder: No
- Continuous sound pressure level (max.) [dB(A)]: 70
- Connection type: Conventional
- Protection class: IP44
- Width gate wing (max.) [m]: 3
- Height gate wing (max.) [m]: 2
- Weight of gate leaf (max.) [kg]: 500
- E dimension (min.) [mm]: 0
- E dimension (max.) [mm]: 230
- E dimension (min./max.) [mm]: 0/230
- Gradient (max.) [%]: 0
- Temperature (min.) [°C]: -20
- Temperature (max.) [°C]: 55
- Temperature (min./max.) [°C]: -20/55
- Temperature (min.) [°F]: -4 °F
- Temperature (max.) [°F]: 131 °F
- Push and pull force (max.) [N]: 1,500
- Operating mode (duty cycle): S2 - 8 min
- Motor power [kW]: 0.09
- Running speed (max.) [cm/s]: 2.6
- Opening angle (max.) [°]: 120
- Operating voltage [V]: 24 V-DC
- Operating voltage type: Direct current
- Motor voltage [V]: 24 V-DC
- Rated current [A]: 3.5
- Width [mm]: 100
- Height [mm]: 104
- Depth [mm]: 844
- Depth (min.) [mm]: 844
- Depth (max.) [mm]: 844
- Movement stroke (max.) [mm]: 415
- Weight [kg]: 6
- Garantie: 5 years

### Accessories

---

Item no.	Description
178466	EXRB Angle extension for opening to the outside
178390	FCRAY Mechanical end stop in direction CLOSE

<b>Item no.</b>	<b>Description</b>
178394	<b>KC</b> Locking cylinder with 2 keys for securing the emergency release device
178386	<b>ADFB</b> 2 adjustable gate brackets
178387	<b>ADRB</b> 2 adjustable angle brackets
178388	<b>ADWA</b> Adapter for NICE WINGO and CAME ATI
178389	<b>STAF</b> Adapter for NICE TOONA pillar angle
178391	<b>ELS-C</b> 12 V-DC electric lock for pillar locking from a wing span of 2.5 m
178386	<b>ADFB</b> 2 adjustable gate brackets
178387	<b>ADRB</b> 2 adjustable angle brackets
178388	<b>ADWA</b> Adapter for NICE WINGO and CAME ATI
178466	<b>EXRB</b> Angle extension for opening to the outside
178389	<b>STAF</b> Adapter for NICE TOONA pillar angle
178390	<b>FCRAY</b> Mechanical end stop in direction CLOSE
178394	<b>KC</b> Locking cylinder with 2 keys for securing the emergency release device
178391	<b>ELS-C</b> 12 V-DC electric lock for pillar locking from a wing span of 2.5 m

## Technical drawings

---

### Comfort RA2224

