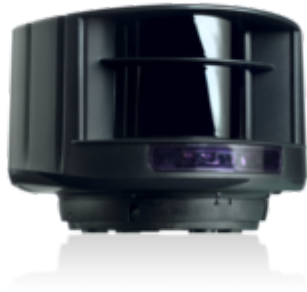


LZR-H100



Article

Item no.	Description
167043	LZR-H100 Laser motion detector and safeguard sensor for parking barriers, 9.9x9.9 m horizontal detection field, with 10 m cable

Scope of delivery

- Motion and presence sensor
- Connection cable, 10,000 mm

Features

Features

- Contactless opening of barriers by entering the detection area
- Contactless protection of barrier, persons or objects by presence detection in the entrance of the barrier and below the barrier boom
- When mounting a device with reference point on the opposite side (e.g. pillar, post, etc.), it is possible to use it as an E-device & to secure the barrier boom
- Directional detection avoids false openings and saves energy costs
- Capture filter to distinguish between people and vehicles

Use

- For all parking barriers. For all sliding gates (cannot be used as an E-device for safeguarding). An additional power supply unit for voltage supply is required

Technical data

- Connection type: Conventional
- Inputs:
 - 1 Test input
- Outputs:
 - 2 potential-free relay contacts
- Sensoren: Laser
- Wave length [nm]: 905
- Protection class: IP65
- Color: Black
- Temperature (min.)[°C]: -30
- Temperature (max.)[°C]: 60
- Temperature (min./max.)[°C]: -30/60
- Temperature (min.)[°F]: -22
- Temperature (max.)[°F]: 140
- Detection field laser (WxL max.)[m]: 9.9x9.9
- Operating voltage [V]: 10-35 V-DC
- Operating voltage type: Direct current
- Power consumption [VA/W/kW]: 5 W
- Contact load (max.):
 - 48 VA/30 W
- Width [mm]: 125
- Height [mm]: 70
- Depth [mm]: 93
- Packing width: 205
- Packing height: 123
- Packing depth/length: 207
- Packing weight: 1.027
- Freight forwarding articles: No
- GTIN: 4062434012338
- Customs tariff number: 85365080
- Country of origin 1000: Belgien
- Garantie: -

Accessories

Item no.	Description
166258	Installation bracket Installation bracket for wall or ceiling mounting for LZR laser scanner
184542	Protective housing to protect the LZR-H100 laser scanner
184543	Installation bracket for installation the protective housing LZR-H100 under the barrier boom

Item no.	Description
184827	Power supply 24 V-DC/2.5 A 2 outputs, top hat rail installation
184828	Power supply 24 V-DC/2.5 A in CS mini housing 2 outputs, in CS mini housing, IP65, with 1.5 m cable and Schuko plug
148657	Remote control Infrared remote control for setting radar motion detectors and laser scanners

Technical drawings

