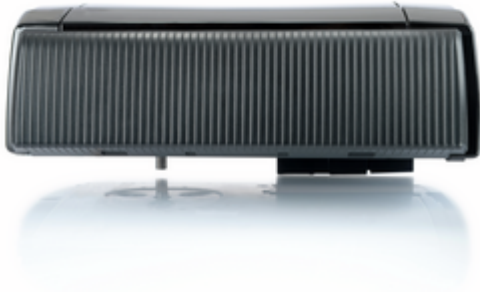


# Comfort 390



## Article

Item no.	Description
167474	<b>Comfort 390</b> Set for garage doors up to 240 kg: 24 V-DC motor, 1.200 N, 16 cm/s

## Scope of delivery

- Motor unit with integrated control
- Universal installation set for up-and-over and sectional doors
- Mains cable with Euro plug type C, 1,500 mm

## Features

### Comfort 390

#### Features

- Connections for push button, light barrier, wicket door contact, battery backup and expansion boards for retrofitting additional functions
- Entry solution for collective garages with simple connection options
- DC motor: soft start and stop are gentle on the door, separately adjustable opening and closing speeds enable fast opening and standard-compliant closing
- Integrated control with illuminated LC display and easy programming
- Powerful DC gearmotor with high self-locking for gates up to 6.0 m wide and 240 kg weight
- Battery backup can be integrated in the housing

#### Features functions

- Power-saving technology

- Soft start/soft stop/soft run
- Electronic anti-deferral device
- Blocking protection
- Runtime limit
- Reversal of direction of rotation programmable
- Backjump (relief of the closing edge)
- Automatic feed function (can only be used in conjunction with a light barrier)
- Intermediate position OPEN and CLOSED separately programmable
- Gate travel speed OPEN and CLOSE separately programmable
- Soft run position OPEN and CLOSE separately programmable
- Soft run speed OPEN and CLOSE separately programmable
- Frame function (blanking of frame light barriers)
- Programmable impulse input and output
- Cycle counter
- Maintenance interval programmable
- Error signaling with error memory
- Multi-level reset function (control, safety, radio, etc.)

### Features end position adjustment

- Electronic limit stop

### Features operation

- Marantec EOS programming
- Programming and status message via LC display
- Programming and diagnostics possible via optional external handheld programmer
- Programming and diagnostics possible via maveo pro by smartphone app

### Features structure and connection

- Connection (MS-Bus) for expansion boards (boards can be integrated)
- Output 24 V-DC, max. 50 mA
- Connection (conventional) for push button, light barrier and holding circuit
- Pluggable radio receiver
- Connection (MS bus) for handheld programmer and expansion modules
- Connection for battery backup

## Use

---

### Comfort 390

	Comfort 390
Width overhead doors (max.) [m]	6
Width of tipping and canopy gates (max.) [m]	6
Height of tilt and canopy gates (max.) [m]	2.25
Width of single-wall sectional doors (max.) [m]	6

Width of double-walled sectional doors (max.) [m]	6
Gate weight (max.) [kg]	240

## Technical data

---

### Comfort 390

- Overload protection: Shutdown via current consumption
- Continuous sound pressure level (max.) [dB(A)]: 70
- Connection type: Pluggable
- Illuminant: Without
- Protection class: IP20
- Protection class: II
- Width overhead doors (max.) [m]: 6
- Width of tipping and canopy gates (max.) [m]: 6
- Width of single-wall sectional doors (max.) [m]: 6
- Width of double-walled sectional doors (max.) [m]: 6
- Height of tilt and canopy gates (max.) [m]: 2.25
- Gate weight (max.) [kg]: 240
- Temperature (min.) [°C]: -20
- Temperature (max.) [°C]: 60
- Temperature (min./max.) [°C]: -20/60
- Temperature (min.) [°F]: -4 °F
- Temperature (max.) [°F]: 140 °F
- Luftfeuchtigkeit (max., nicht kondensierend) [%]: 93
- Push and pull force (max.) [N]: 1,200
- Nominal push and pull force (max.) [N]: 360
- Cycles per hour (max.):\*
- Cycles per day (max.): 300
- Running speed (max.) [cm/s]: 16
- Operating voltage [V]: 230 V/1~
- Operating voltage type: Alternating current
- Nominal frequency [Hz]: 50/60
- Motor voltage [V]: 24 V-DC
- Control voltage [V]: 24 V-DC
- Rated current [A]: 1.1
- Power consumption [VA/W/kW]: 0.25 kW
- Power consumption in standby [VA/W/kW]: 3.5 W
- Width [mm]: 360
- Height [mm]: 135
- Depth [mm]: 335
- Weight [kg]: 5

- Garantie: 5 years

## Accessories

Item no.	Description
177208	<b>SZ 11</b> Opener rail for garage door openers, 3.08 m profile length, 0.8 mm thickness, toothed belt, 2-piece
177214	<b>SZ 11</b> Opener rail for garage door openers, 3.08 m profile length, 1.2 mm thickness, ball bearing, toothed belt, 2-piece
151050	<b>Ceiling pull switch</b> with slow action and 3.5 m pull rope
184190	<b>MSC-APZ 1-2T/1</b> Key switch for surface installation, 2-sided momentary contact, metal housing, IP54, 3 keys
81076	<b>Command 802</b> RFID transponder system with 30 memory locations, consisting of: Evaluation unit with reader module, IP54, 2 m cable and 3 transponder code cards
165748	<b>Digital 713</b> 2-channel universal receiver with 2,000 memory locations and 2 relays, 24 V, IP20, unidirectional, 868 MHz DM7S
102053	<b>Digital 179</b> module antenna and magnetic base antenna with 5 m cable, uni-directional, 868 MHz Multi-Bit
101185	<b>Digital 941</b> Module receiver with 200 memory locations and magnetic base antenna with 5 m cable, bidirectional, 868 MHz bi.linked
97725	<b>Special 630 with installation bracket set</b> Through beam photoelectric sensor with 8 m range, 2-wire, IP54, with installation brackets, with 10 m cable
116025	<b>Wicket door contact for installation</b> with 5 m cable, conventional, 8.2 kOhm, for installation in the frame, complies with DIN EN 13849-1 Pl c cat 2.

# Comfort 390

