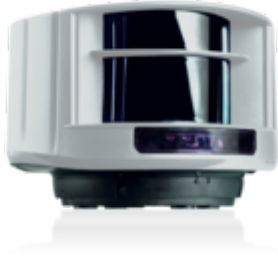


LZR-I110



Article

Item no.	Description
148656	LZR-I110 Laser motion detector and safety sensor for vertical doors, 5.0x5.0 m vertical detection field, white, with 10 m cable

Scope of delivery

- Fuse sensor
- Connection cable, 10.000 mm

Features

Features

- Contactless protection of gate, persons or objects by presence detection in the entrance of the gate
- When one device is installed on the inside and one on the outside, it is possible to use it as an electrical device to secure the door
- 2 programmable virtual pull push buttons for opening the gate

Use

- For all Marantec controls and third-party products. An additional power supply unit for voltage supply is required for many controls

Technical data

- Connection type: Conventional
- Inputs:
1 Test input
- Outputs:
2 potential-free relay contacts
- Sensoren: Laser
- Wave length [nm]: 905
- Protection class: IP65
- Color: White
- Temperature (min.) [°C]: -30
- Temperature (max.) [°C]: 60
- Temperature (min./max.) [°C]: -30/60
- Temperature (min.) [°F]: -22
- Temperature (max.) [°F]: 140
- Detection field laser (WxL max.) [m]: 5x5
- Operating voltage [V]: 10-35 V-DC
- Operating voltage type: Direct current
- Power consumption [VA/W/kW]: 5 W
- Contact load (max.):
48 VA/30 W
- Width [mm]: 125
- Height [mm]: 84
- Depth [mm]: 93
- Packing width: 203
- Packing height: 120
- Packing depth/length: 206
- Packing weight: 1.04
- Freight forwarding articles: No
- GTIN: 4062434012222
- Customs tariff number: 85365080
- Country of origin 1000: Deutschland
- Garantie: -

Accessories

Item no.	Description
166258	Installation bracket Installation bracket for wall or ceiling mounting for LZR laser scanner
184827	Power supply 24 V-DC/2.5 A 2 outputs, top hat rail installation
184828	Power supply 24 V-DC/2.5 A in CS mini housing 2 outputs, in CS mini housing, IP65, with 1.5 m cable and Schuko plug
148657	Remote control Infrared remote control for setting radar motion detectors and laser scanners

Technical drawings

